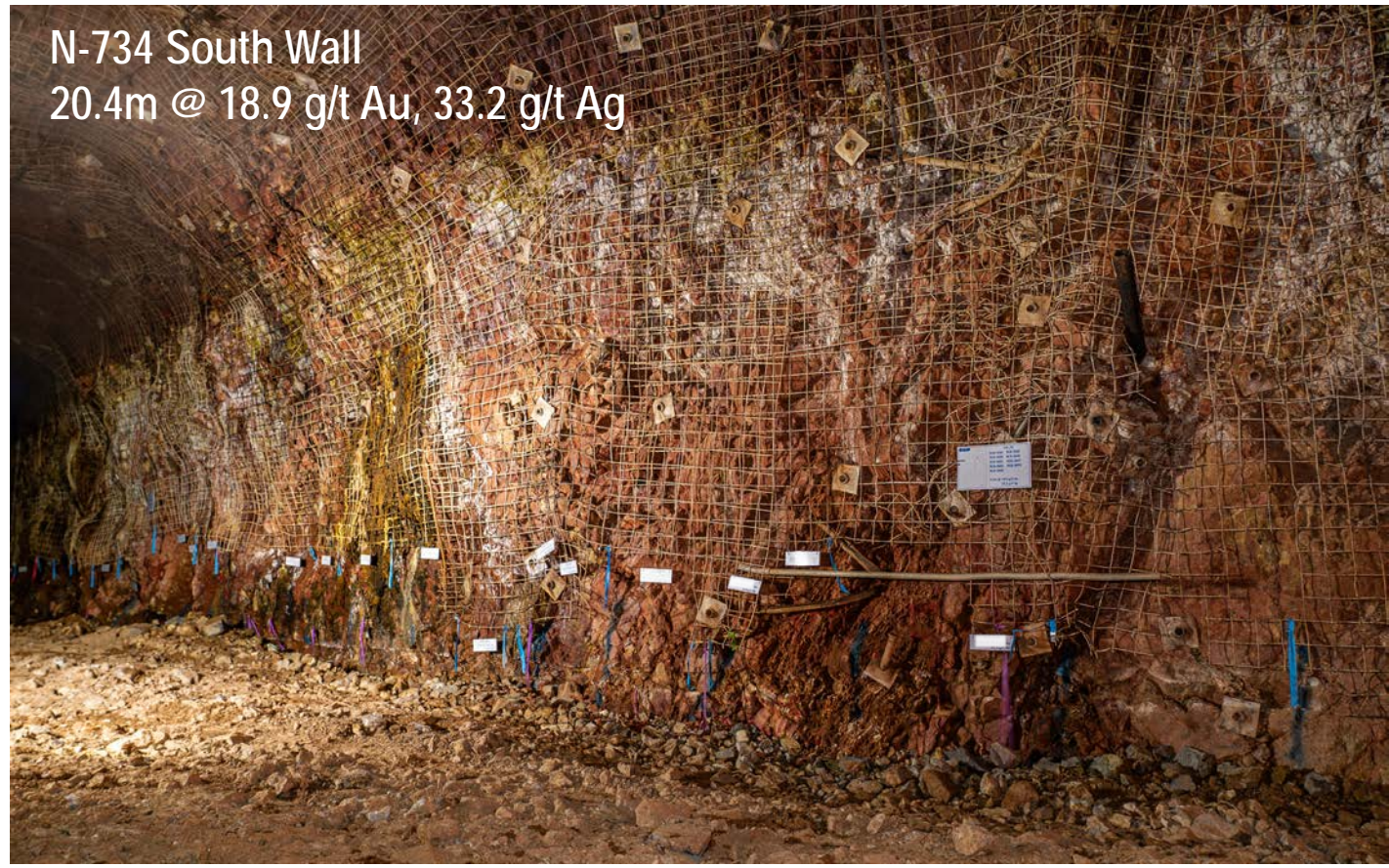


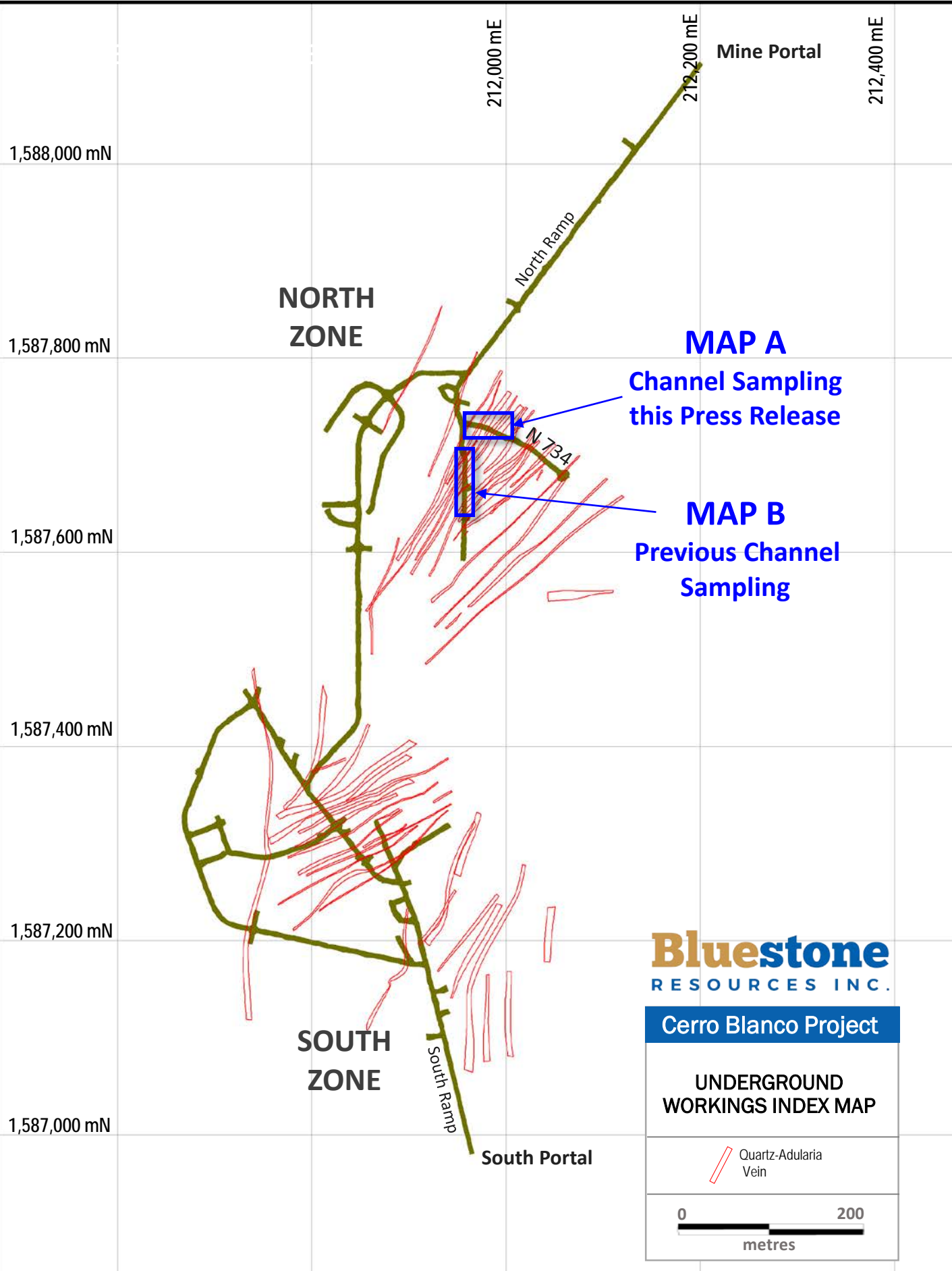
Cross-cut N-734
Underground Photographs

N-734 South Wall
20.4m @ 18.9 g/t Au, 33.2 g/t Ag



N-734 North Wall
19.9m @ 17.1 g/t Au, 23 g/t Ag





Mine Portal

212,400 mE

212,200 mE

212,000 mE

1,588,000 mN

1,587,800 mN

1,587,600 mN

1,587,400 mN

1,587,200 mN

1,587,000 mN

**NORTH
ZONE**

MAP A

**Channel Sampling
this Press Release**

North Ramp

N 734

MAP B

**Previous Channel
Sampling**

**SOUTH
ZONE**

South Ramp

South Portal

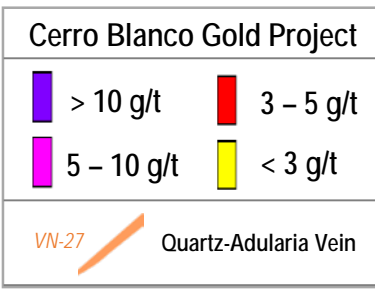
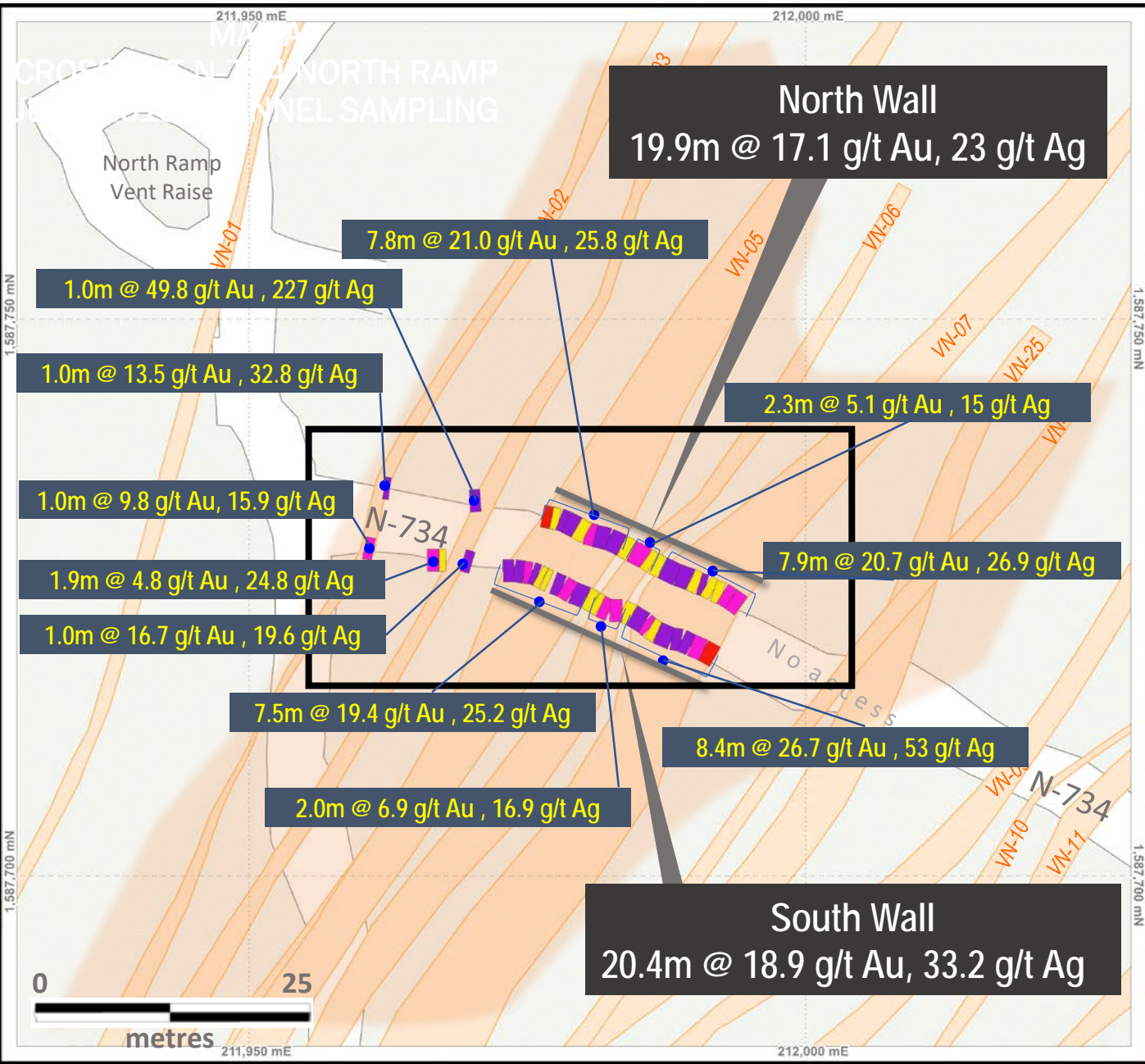
Bluestone
RESOURCES INC.

Cerro Blanco Project

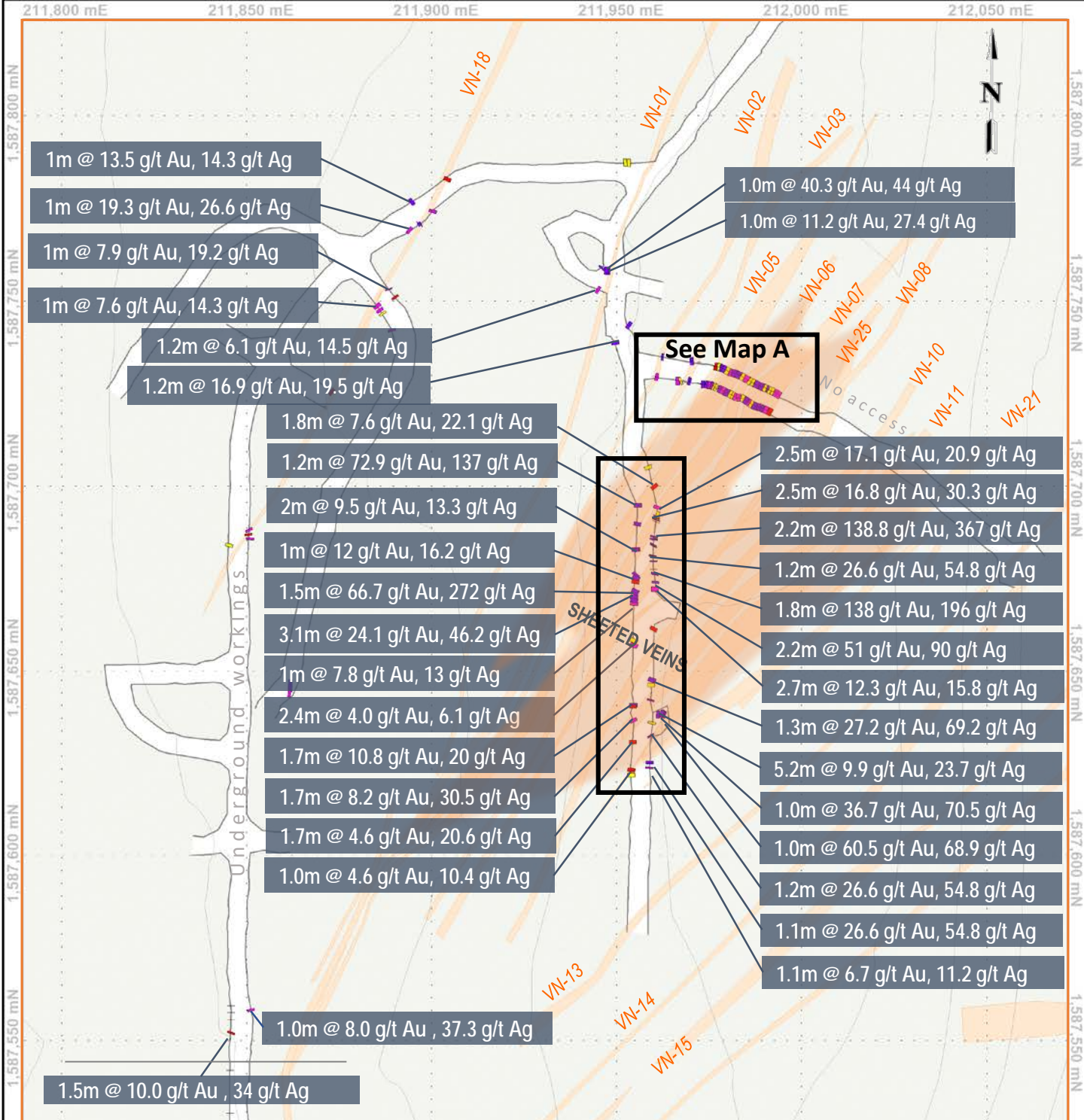
**UNDERGROUND
WORKINGS INDEX MAP**

Quartz-Adularia
Vein

0 200
metres



MAP A
CROSS CUT N -734
JUNE 2019 CHANNEL SAMPLING



MAP B

2018 CHANNEL SAMPLING

NORTH RAMP

Bluestone
RESOURCES INC.

Cerro Blanco Gold Project

- > 10 g/t
- 3 – 5 g/t
- 5 – 10 g/t
- < 3 g/t

VN-27 Quartz-Adularia Vein

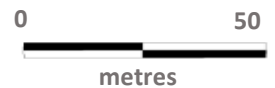


Table 2 - Cross-cut N-734 - All South Wall Assays

SOUTH WALL

Sample #	Sample Width (m)	True Width (m)	Au g/t	Ag g/t	Vein ID
RCB-3655	1.0	1.0	9.8	15.9	VN-02
RCB-3570	1.2	1.2	6.2	36.4	NEW
RCB-3656	0.7	0.7	2.5	4.9	NEW
Average	1.90	1.90	4.8	24.8	
RCB-3657	1.0	1.0	16.7	19.6	VN-03
RCB-3599	1		29.8	34.5	VN_05
RCB-3600	0.9		48.6	45.3	VN_05
RCB-3601	0.7		5.6	16.4	VN_05
RCB-3602	0.6		22.4	18.4	VN_05
RCB-3604	0.5		2.3	2.7	VN_05
RCB-3605	0.5		0.7	1.9	VN_05
RCB-3606	0.9		21.0	25.6	VN_05
RCB-3607	1.0		6.7	16.8	VN_05
RCB-3609	1.4		19.9	35.3	VN_05
Average	7.50	6.96	19.4	25.2	
RCB-3610	0.8		0.3	1.2	wallrock
RCB-3611	0.7		2.6	6.3	wallrock
RCB-3612	0.9		7.5	18.8	VN_06
RCB-3613	1.1		6.4	15.3	VN_06
Average	2.00	1.77	6.9	16.9	
RCB-3614	1.00		0.6	3.8	wallrock
RCB-3615	1.3		98.8	197.0	VN_07
RCB-3616	0.7		6.1	45.2	VN_07
RCB-3618	0.8		1.3	20.4	VN_07
RCB-3619	1.4		10.5	25.3	VN_07
RCB-3620	0.9		28.4	22.7	VN_07
RCB-3621	0.9		40.3	33.1	VN_07
RCB-3622	1.2		6.5	36.7	VN_07
RCB-3624	1.2		4.9	9.3	VN_07
Average	8.40	7.99	26.7	53.0	
Total Section	20.4	16.7	18.9	33.2	VN_05,06,07

Table 3 - Cross-cut N-734 - All North Wall Assays

NORTH WALL

Sample #	Sample Width (m)	True Width (m)	Au g/t	Ag g/t	Vein ID
RCB-3596	1.0	1.00	13.5	32.8	VN_02
RCB-3594	1.0	1.00	49.8	227.0	VN_03
RCB-3625	0.8		3.4	16.2	VN_05
RCB-3626	0.7		1.9	3.6	VN_05
RCB-3627	0.7		44.0	38.3	VN_05
RCB-3628	1.1		57.6	54.3	VN_05
RCB-3629	1.0		0.8	3.0	VN_05
RCB-3630	0.9		7.6	10.5	VN_05
RCB-3631	1.3		32.5	41.6	VN_05
RCB-3632	1.3		12.2	24.9	VN_05
Average	7.8	7.25	21.0	25.8	
RCB-3634	1.0		0.3	8.9	wallrock
RCB-3635	1.5		6.6	19.0	VN_06
RCB-3636	0.8		2.2	8.5	VN_06
Average	2.3	2.15	5.1	15.3	
RCB-3637	0.9		0.1	0.7	wallrock
RCB-3638	1.5		25.2	46.6	VN_07
RCB-3639	1.3		77.2	63.6	VN_07
RCB-3641	0.9		0.1	5.8	VN_07
RCB-3642	0.6		23.3	47.8	VN_07
RCB-3643	0.8		0.5	5.2	VN_07
RCB-3644	0.8		0.3	5.2	VN_07
RCB-3645	0.9		5.5	9.6	VN_07
RCB-3646	1.1		5.2	7.9	VN_07
Average	7.9	7.45	20.7	26.9	
Total Section	19.9	16.9	17.1	23.0	VN_05,06,07