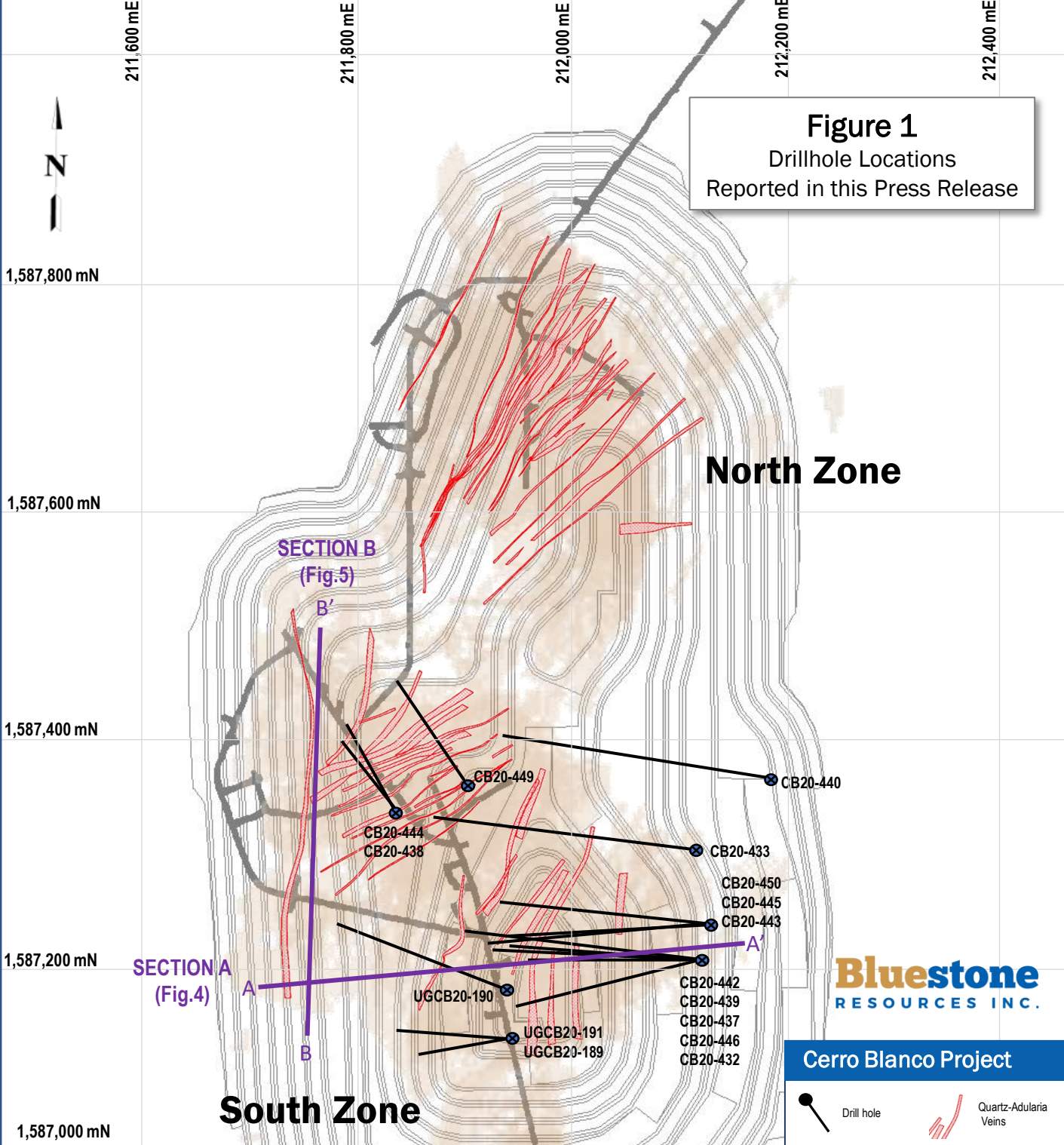


**Figure 1**  
Drillhole Locations  
Reported in this Press Release



**Bluestone**  
RESOURCES INC.

**Cerro Blanco Project**

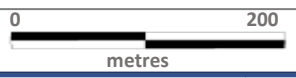
-  Drill hole
  -  Quartz-Adularia Veins
- CB20-450** Drill holes reported this Press Release



Plan of underground workings overlain on conceptual pit shell (refer PEA, effective date February 28, 2021)



> 1 g/t Au  
Block Model Grade



HOLE_ID	PLATFORM	EAST	NORTH	ELEVATION	AZIMUTH	DIP	FINAL DEPTH
UGCB20-189	ESUG15-05	211938.24	1587079.63	479.11	258	-63	186.54
UGCB20-190	ESUG113-07	211934.96	1587128.07	472.99	289.22	-24	185.01
UGCB20-191	ESUG15-07	211938.34	1587080.08	479.10	271	-57	184.10
CB20-432	ESS112-01	212124.60	1587155.01	507.94	258	-60	355.09
CB20-433	ESS15-05	212112.56	1587258.57	509.05	279	-37	301.14
CB20-437	ESS112-05	212122.84	1587155.03	508.15	275	-50	319.13
CB20-438	ESS111-01	211833.78	1587296.33	560.95	321	-69	220.98
CB20-439	ESS112-06	212123.26	1587154.97	508.11	275	-60	350.22
CB20-440	ESS17-02	212187.78	1587326.70	496.38	279	-38	341.99
CB20-442	ESS112-03	212122.33	1587155.14	508.22	275	-42	306.02
CB20-443	ESS112A-01	212130.08	1587185.91	509.37	267.41	-47	320.95
CB20-444	ESS111-03	211833.73	1587296.41	560.96	344	-66	225.55
CB20-445	ESS112A-02	212130.70	1587185.96	509.40	267.41	-56	328.27
CB20-446	ESS112-02	212124.56	1587154.72	508.08	270	-63	356.92
CB20-449	ESS118-08	211899.94	1587321.92	568.02	323.3	-53	184.40
CB20-450	ESS112A-03	212130.42	1587186.09	509.43	277	-53	326.75

Figure 2 - 3D VIEW NORTH EAST - Drillhole Locations - this Press Release

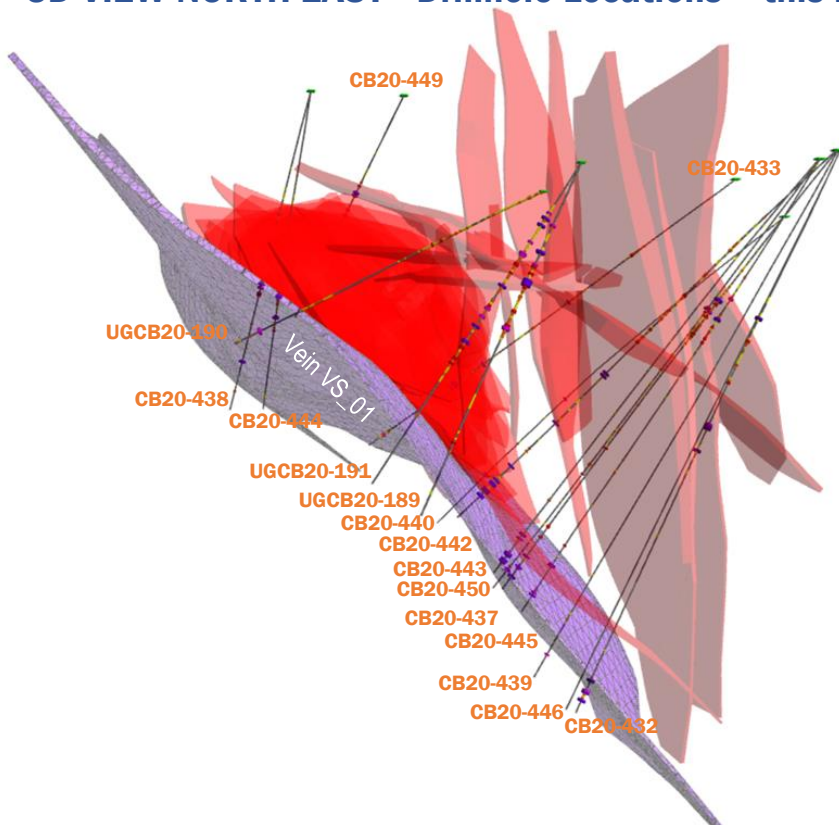
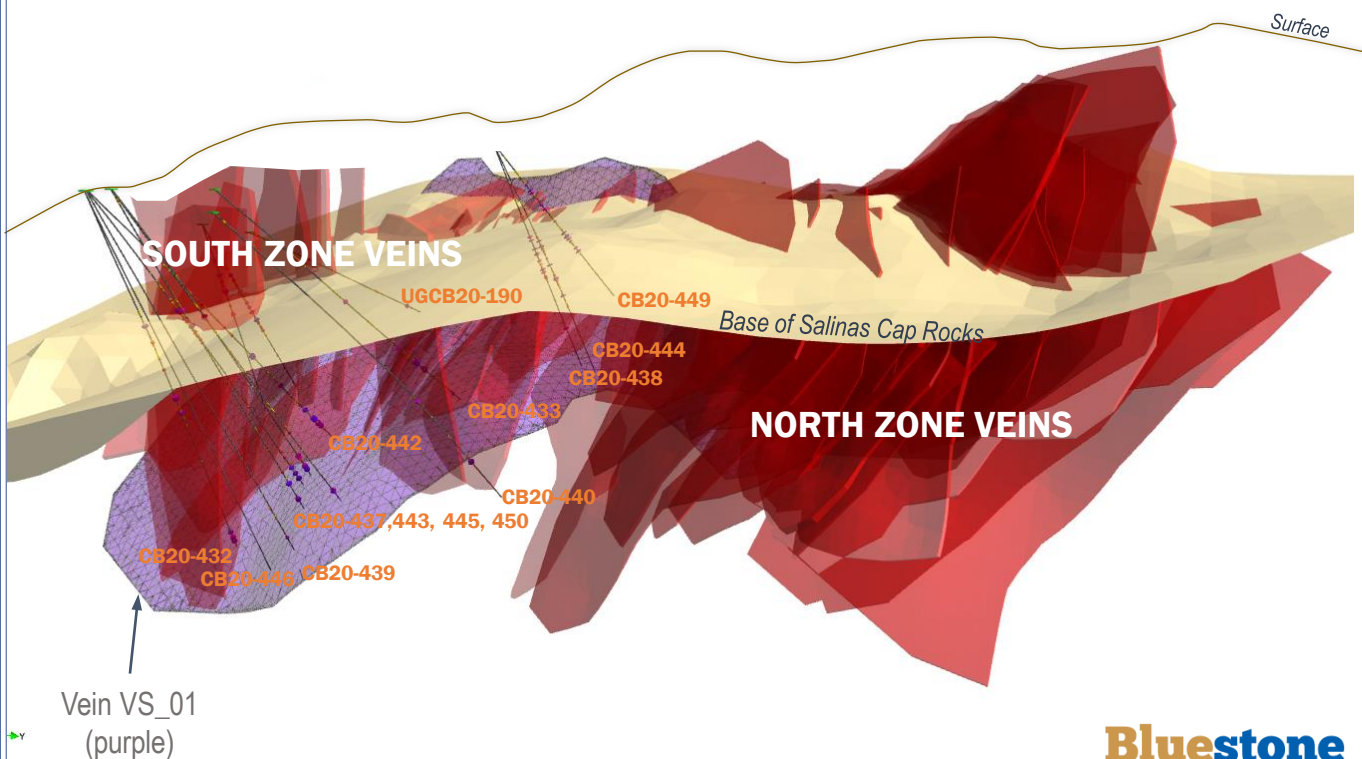


Figure 3 - 3D VIEW SOUTH WEST - Drillhole Locations - this Press Release



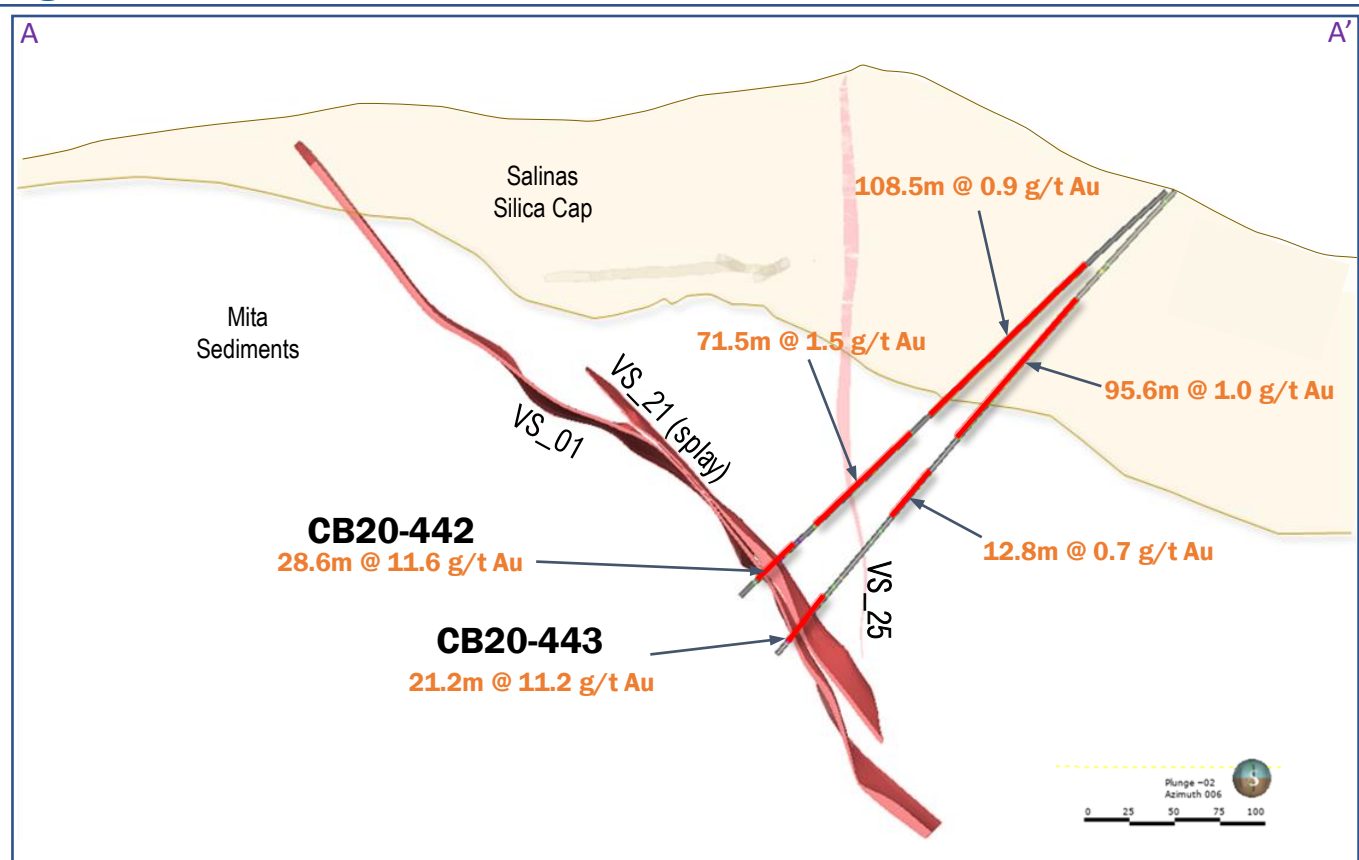
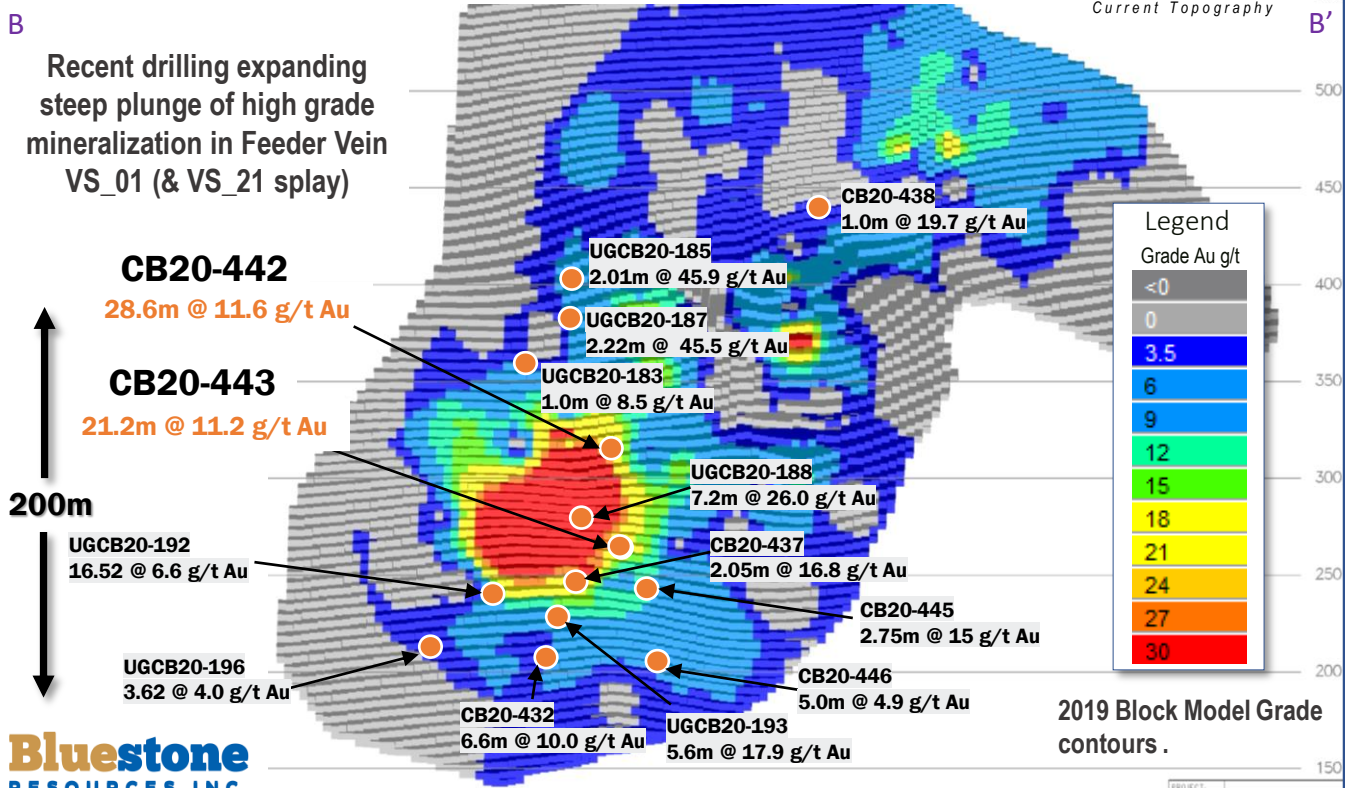
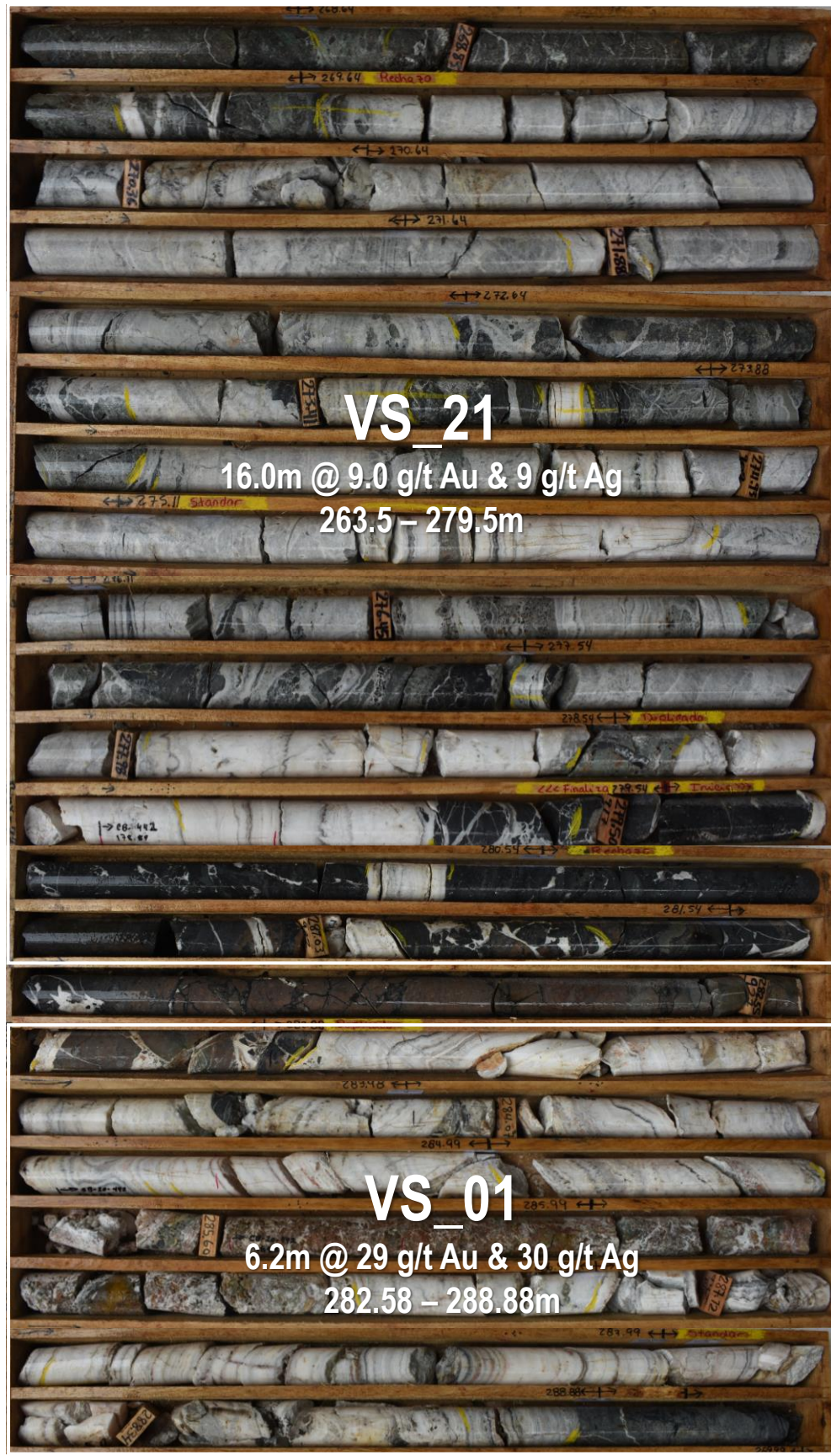


Figure 5 VS\_01 Longitudinal Section Looking West



**Total Intercept**  
 28.6m @ 11.6 g/t Au & 12 g/t Ag  
 263.5 – 292.1m

**Veins VS\_01 & VS\_21**  
 Colloform banded quartz-calcite  
 veining hosted in tuffaceous  
 volcanics intercalated with  
 black silty mudstone. Traces of  
 acanthite (AgS)



**VS\_21**

16.0m @ 9.0 g/t Au & 9 g/t Ag  
 263.5 – 279.5m

**VS\_01**

6.2m @ 29 g/t Au & 30 g/t Ag  
 282.58 – 288.88m