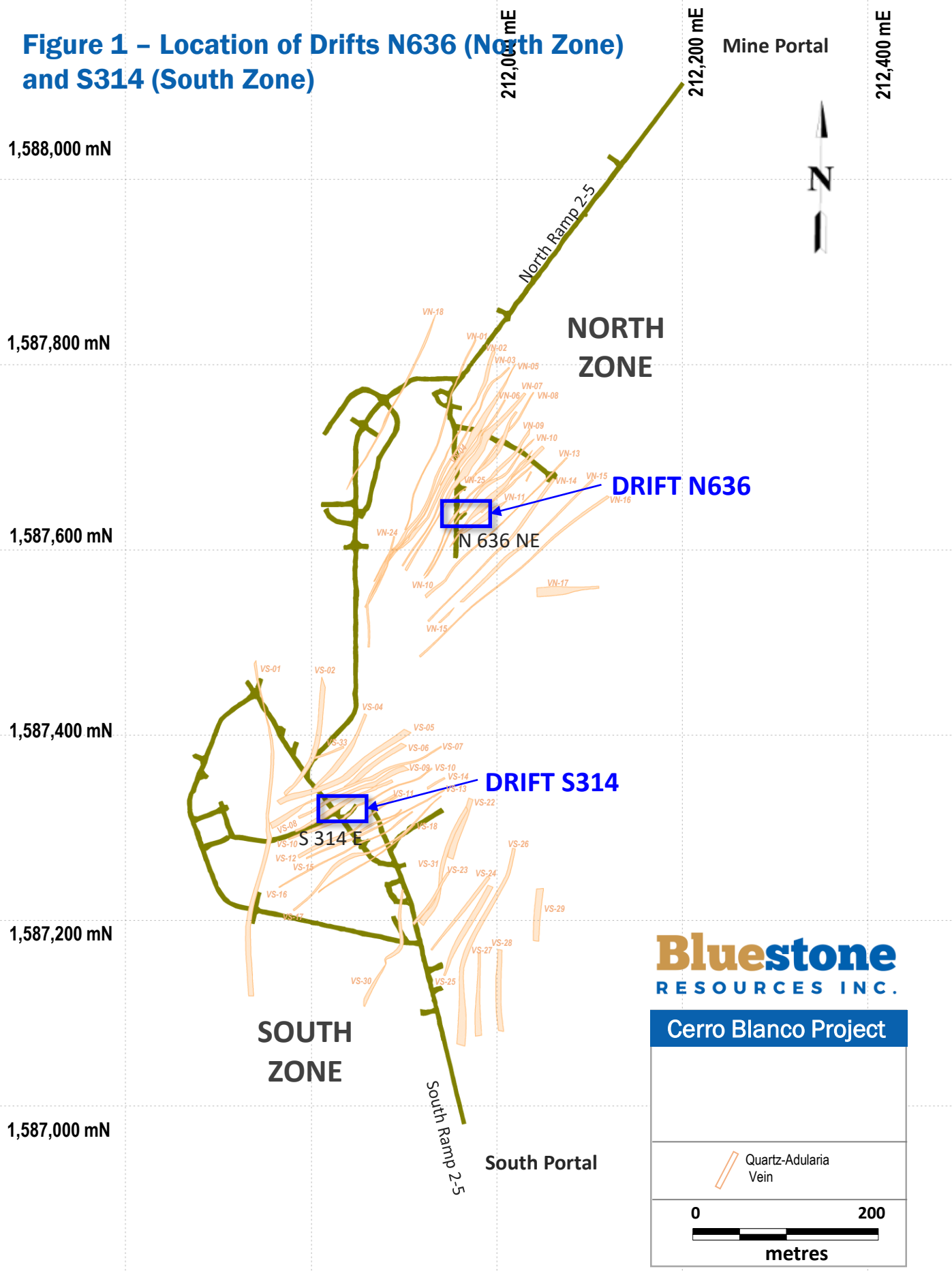


Figure 1 – Location of Drifts N636 (North Zone) and S314 (South Zone)



Bluestone
RESOURCES INC.

Cerro Blanco Project

Quartz-Adularia Vein

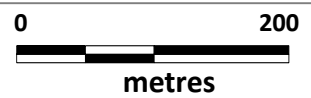
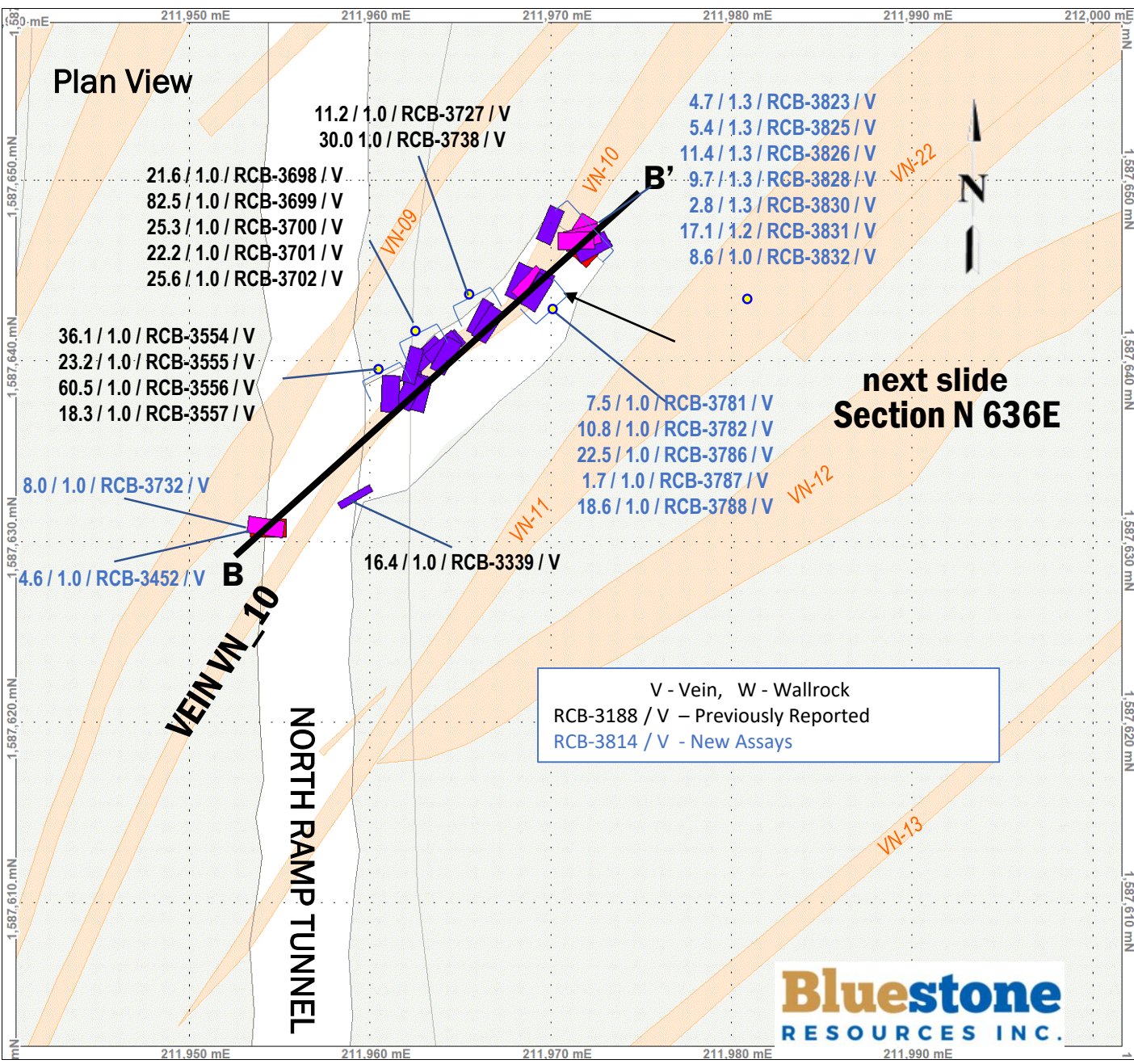
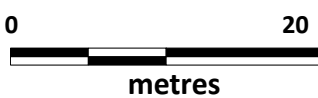


Figure 2 - Sample locations for Drift N636 (Vein VN_10)



VEIN VN_10
CROSS CUT N636_NE
CHANNEL SAMPLING
Au / Width / ID / V-W

V – Quartz Vein

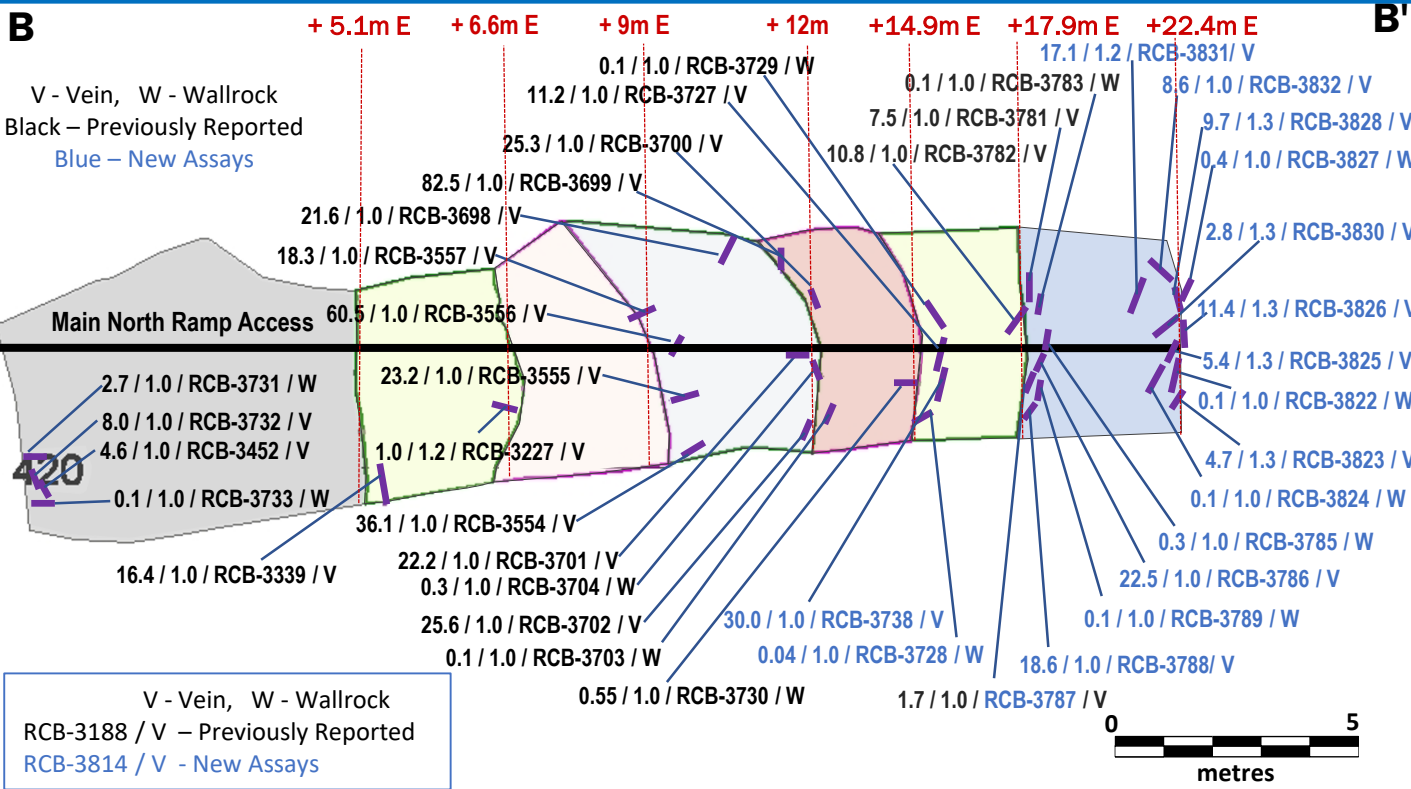


Cerro Blanco Gold Project

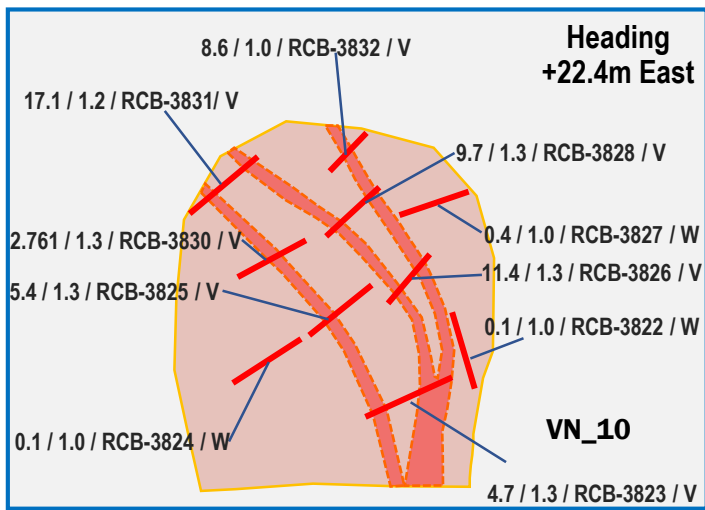
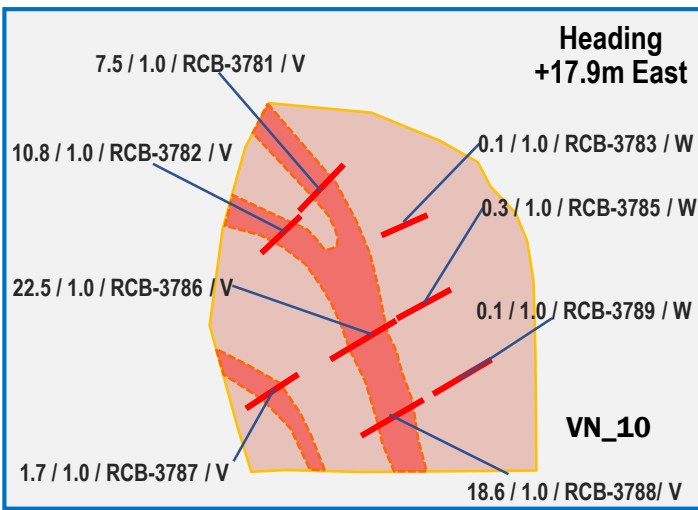
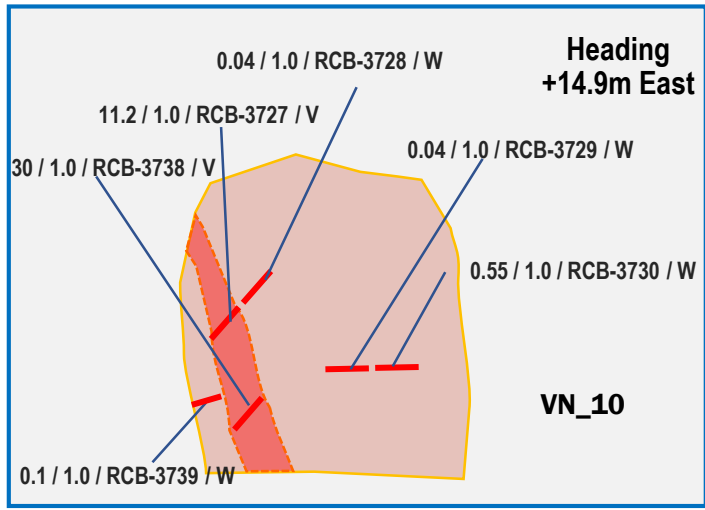
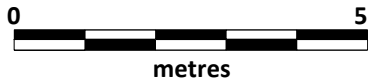
Blue	> 10 g/t	Red	3 – 5 g/t
Purple	5 – 10 g/t	Yellow	< 3 g/t

VN-27 Quartz-Adularia Vein

Figure 3. B – B' Section Along Drift N636 showing Sample Locations



Heading Maps showing Sample locations





Heading
+22.4m East

NORTH ZONE DRIFT L6 N636

SAMPLE ID	NORTH	EAST	ELEV	Drift	Heading	Width M	Au g/t	Ag g/t	VEIN ID
RCB-3339	1,587,632.3	211,959.3	420.2	L6 N636 NE	5.1m E	1.0	16.4	84.7	VN_10
RCB-3554	1,587,638.3	211,962.3	420.2	L6 N636 NE	9m E	1.0	36.1	70.5	VN_10
RCB-3555	1,587,638.4	211,961.9	421.4	L6 N636 NE	9m E	1.0	23.2	62.2	VN_10
RCB-3556	1,587,638.5	211,961.8	422.4	L6 N636 NE	9m E	1.0	60.5	68.9	VN_10
RCB-3557	1,587,638.2	211,960.6	423.2	L6 N636 NE	9m E	1.0	18.3	51.3	VN_10
RCB-3698	1,587,639.8	211,962.0	424.6	L6 N636 NE	12m E	1.0	21.6	81.3	VN_10
RCB-3699	1,587,640.7	211,962.9	424.1	L6 N636 NE	12m E	1.0	82.5	150.0	VN_10
RCB-3700	1,587,641.0	211,963.7	423.4	L6 N636 NE	12m E	1.0	25.3	49.0	VN_10
RCB-3701	1,587,641.1	211,963.9	421.9	L6 N636 NE	12m E	1.0	22.2	30.9	VN_10
RCB-3702	1,587,640.5	211,963.8	420.6	L6 N636 NE	12m E	1.0	25.6	70.9	VN_10
RCB-3727	1,587,642.6	211,965.8	422.0	L6 N636 NE	14.9m E	1.0	11.2	31.1	VN_10
RCB-3452	1,587,631.3	211,954.4	420.3	L6 N636 SW	North Ramp Access	1.0	4.6	20.6	VN_10
RCB-3732	1,587,631.3	211,954.3	419.5	L6 N636 SW	North Ramp Access	1.0	8.0	21.9	VN_10
RCB-3738	1,587,642.3	211,966.2	420.8	L6 N636 NE	14.9m E	1.0	30.0	55.6	VN_10
RCB-3781	1,587,644.6	211,968.5	423.5	L6 N636 NE	17.9m E	1.0	7.5	14.9	VN_10
RCB-3782	1,587,644.5	211,967.9	422.8	L6 N636 NE	17.9m E	1.0	10.8	47.7	VN_10
RCB-3786	1,587,644.3	211,968.9	421.7	L6 N636 NE	17.9m E	1.0	22.5	58.9	VN_10
RCB-3787	1,587,644.7	211,968.2	421.1	L6 N636 NE	17.9m E	1.0	1.7	5.2	VN_10
RCB-3788	1,587,644.0	211,968.9	420.6	L6 N636 NE	17.9m E	1.0	18.6	49.5	VN_10
RCB-3823	1,587,646.7	211,971.8	420.7	L6 N636 NE	22.4m E	1.3	4.7	13.2	VN_10
RCB-3825	1,587,647.3	211,971.2	421.9	L6 N636 NE	22.4m E	1.3	5.4	12.7	VN_10
RCB-3826	1,587,646.7	211,972.1	422.4	L6 N636 NE	22.4m E	1.3	11.4	25.6	VN_10
RCB-3828	1,587,647.4	211,971.6	423.4	L6 N636 NE	22.4m E	1.3	9.7	24.6	VN_10
RCB-3830	1,587,647.8	211,970.3	422.8	L6 N636 NE	22.4m E	1.3	2.8	13.6	VN_10
RCB-3831	1,587,647.7	211,969.6	423.5	L6 N636 NE	22.4m E	1.2	17.1	56.1	VN_10
RCB-3832	1,587,647.1	211,971.4	424.3	L6 N636 NE	22.4m E	1.0	8.6	17.7	VN_10

Black – Previously Reported

Blue – New Assays