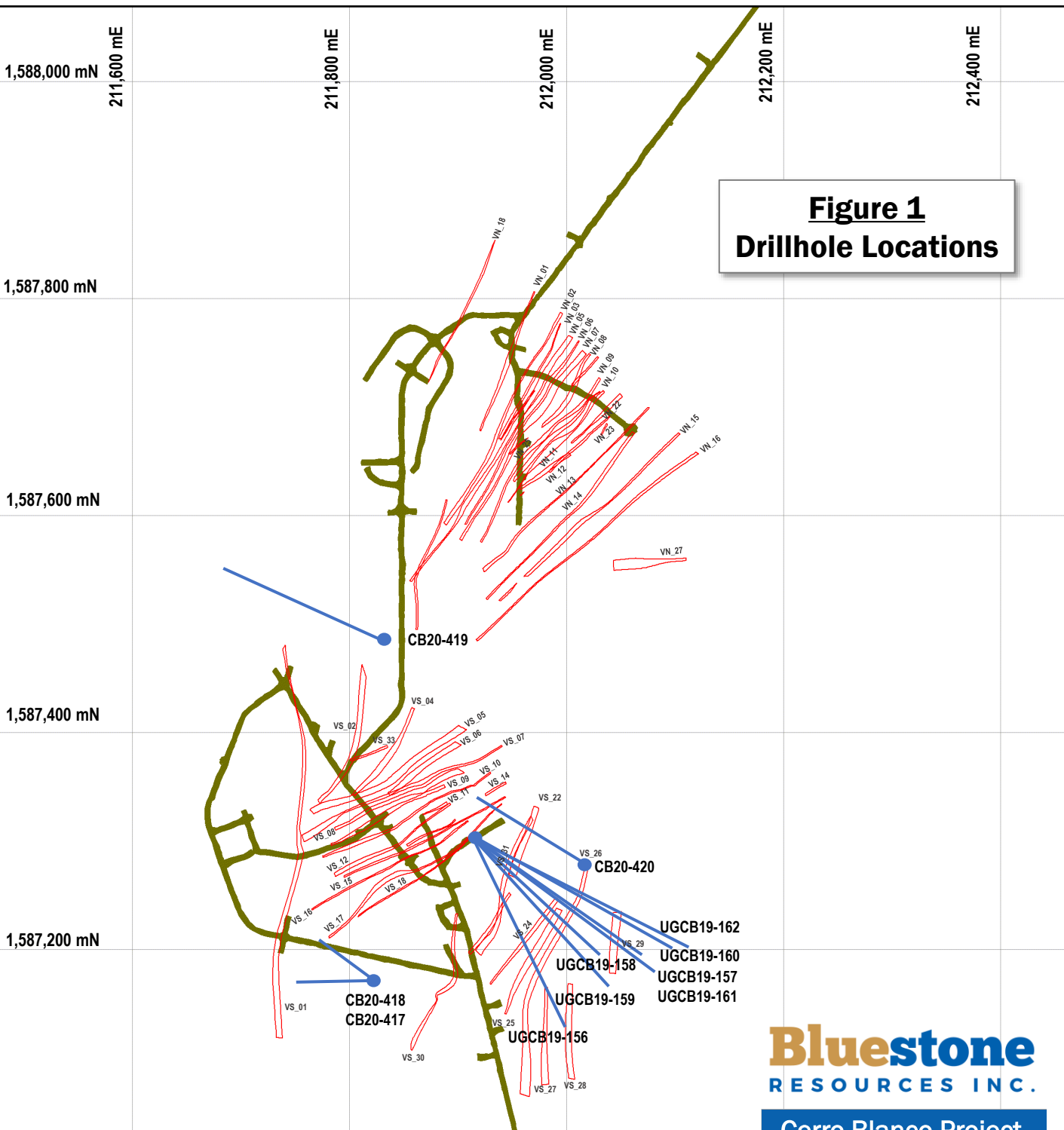




Figure 1
Drillhole Locations




HOLE_ID	PLATFORM	EAST	NORTH	ELEVATION	AZIMUTH	DIP	FINAL DEPTH
UGCB19-156	ESUG3-04	211915.881	1587300.501	452.552	156	-8	193.85
UGCB19-157	ESUG3-02	211916.422	1587300.981	452.785	126	0	183.79
UGCB19-158	ESUG3-03	211916.244	1587300.987	453.857	131	18	158.8
UGCB19-159	ESUG3-05	211916.175	1587300.829	453.539	136	11	182.88
UGCB19-160	ESUG3-01	211916.833	1587301.358	452.81	118	0	203
UGCB19-161	ESUG3-07	211916.29	1587301.012	452.308	126	-15	213.66
UGCB19-162	ESUG3-08	211917.044	1587301.28	452.249	118	-14	217.63
CB20-417	ESSI1-01	211821.439	1587173.374	545.742	270	-62	150.88
CB20-418	ESSI1-02	211821.61	1587173.74	545.89	302	-69	167.03
CB20-419	ESSI2-01	211836.361	1587485.711	567.461	292	-31	189.59
CB20-420	ESSI3-01	212015.748	1587276.903	545.656	300	-63	265.18

Bluestone
RESOURCES INC.

Cerro Blanco Project

 Drill hole
 Quartz-Adularia Vein

 **UGCB19-156** Drill holes reported this Press Release


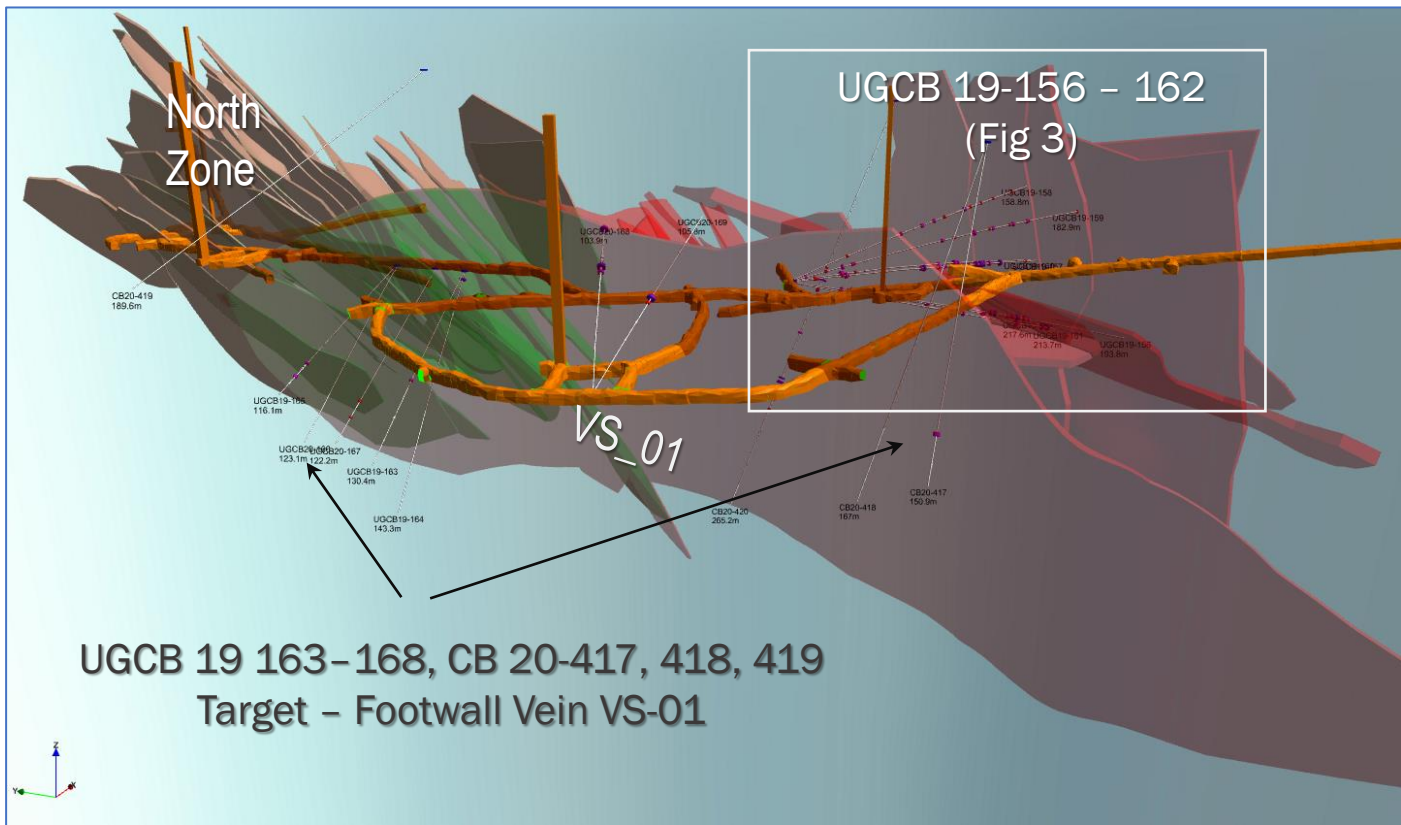


Table 1 – Drill Hole Assay Table

HOLE ID	FROM (m)	TO (m)	CORE INTERVAL (m)	TRUE WIDTH (m)	Au g/t	Ag g/t	Vein ID
UGCB19-156	30.6	31.6	1.0	1.0	5.5	42.4	VS_20
	42.1	43.3	1.2	1.0	6.3	25.4	VS_20
	61.5	64.0	2.5	2.5	5.8	44.3	VS_23
	100.5	101.5	1.0	1.0	5.3	20.1	VS_31
	113.7	117.0	3.3	3.1	6.5	24.6	VS_24
	122.0	136.6	14.5	13.9	4.5	32.2	VS_25
UGCB19-157	14.0	17.1	3.1	3.0	4.0	20.0	VS_20
UGCB19-157	32.9	37.9	5.0	5.0	4.4	27.1	VS_22
	89.9	93.0	3.0	3.0	7.0	25.9	VS_24
	103.2	104.2	1.0	1.0	8.7	77.3	New
	107.3	109.8	2.5	2.5	5.5	43.6	VS_26
	121.8	123.3	1.5	1.5	5.3	39.4	New
	126.4	127.8	1.5	1.5	3.7	11.8	New
	132.3	139.3	7.0	7.0	10.7	131.5	New
	143.0	144.3	1.3	1.3	7.8	30.5	New
	151.8	153.0	1.2	1.2	11.3	239.0	New
	173.1	174.3	1.1	1.0	3.8	28.2	VS_29
UGCB19-158	35.4	36.6	1.1	1.1	3.9	20.1	VS_31
UGCB19-158	94.2	95.3	1.1	1.1	6.4	30.9	VS_24
	101.1	102.4	1.3	1.3	4.4	21.1	VS_25
	115.2	120.1	4.9	4.9	3.8	52.5	VS_26
	126.3	127.4	1.0	1.0	4.4	20.1	New
	134.7	135.9	1.3	1.3	3.6	33.5	New
	147.3	148.4	1.1	1.1	3.9	39.9	VS_29
UGCB19-159	30.3	31.3	1.0	1.0	7.8	16.4	New
	36.5	38.7	2.1	2.0	4.8	26.8	VS_31
	93.6	94.8	1.2	1.1	5.7	28.5	VS_24
	101.2	102.4	1.2	1.2	5.0	12.9	VS_25
	114.3	115.5	1.2	1.2	8.5	31.0	VS_26
	124.1	127.7	3.6	3.6	3.7	28.3	New
	137.3	140.8	3.5	3.5	3.9	37.6	New
	148.7	150.8	2.1	2.1	5.3	33.0	New
	181.9	182.9	1.0	1.0	4.7	24.2	VS_29
UGCB19-160	35.9	38.1	2.3	2.3	8.6	63.5	VS_22
	46.9	48.2	1.2	1.2	4.1	10.2	VS_31
	116.2	117.5	1.3	1.3	5.2	7.7	VS_26
	130.2	134.7	4.6	4.6	6.5	10.3	New
UGCB19-161	40.0	41.5	1.4	1.4	8.9	24.1	VS_22
	118.4	119.5	1.1	1.1	9.3	21.3	VS_26
	128.8	129.9	1.0	1.0	8.4	22.7	New
	174.6	176.0	1.4	1.4	9.9	13.6	New
	197.5	198.5	1.0	1.0	10.5	10.3	VS_29
	202.7	203.7	1.0	1.0	22.2	17.7	VS_29
UGCB19-162	113.4	114.5	1.1	1.1	8.9	7.8	VS_26
	168.2	170.6	2.4	2.3	14.6	9.0	VS_29
	195.6	196.6	1.0	1.0	5.8	5.9	New
	212.0	213.1	1.1	1.1	8.0	11.4	New
UGCB19-163	76.5	77.5	1.0	1.0	6.0	32.5	VS_01
UGCB19-164	4.8	5.8	1.0	1.0	11.5	47.9	VS_02
UGCB19-165	3.6	4.4	0.8	0.8	5.3	16.5	VN_24
UGCB19-165	90.5	91.7	1.2	1.0	5.2	14.6	VS_01
UGCB20-166	3.1	4.1	1.0	1.0	3.2	17.2	VN_24
UGCB20-167	93.0	94.4	1.4	1.2	4.6	1.3	VS_01
UGCB20-168	70.7	75.7	5.01	4.8	18.2	97.2	VS_01,07
UGCB20-168	78.4	79.8	1.3	1.1	3.2	14.2	VS_07
UGCB20-168	100.7	101.7	1.0		12.1	39.6	New
UGCB20-169	52.6	54.6	2	1.8	8.0	81.6	VS_01
CB20-417	127.9	129.5	1.6	1.4	7.9	42.7	VS_01
CB20-418	No Significant Results						
CB20-419	No Significant Results						
CB20-420	114.9	115.9	1.0	0.9	15.4	19.8	VS_22
	121.2	123.4	2.3	1.8	4.6	11.3	VS_22
	167.6	169.2	1.5	1.3	4.6	10.8	VS_14
	179.5	195.0	15.5	15.0	21.6	51.7	VS_06,07,08,10
inc	179.5	183.7	4.2	3.8	48.5	96.7	VS_10
	200.1	201.2	1.0	1.0	3.9	3.5	VS_05

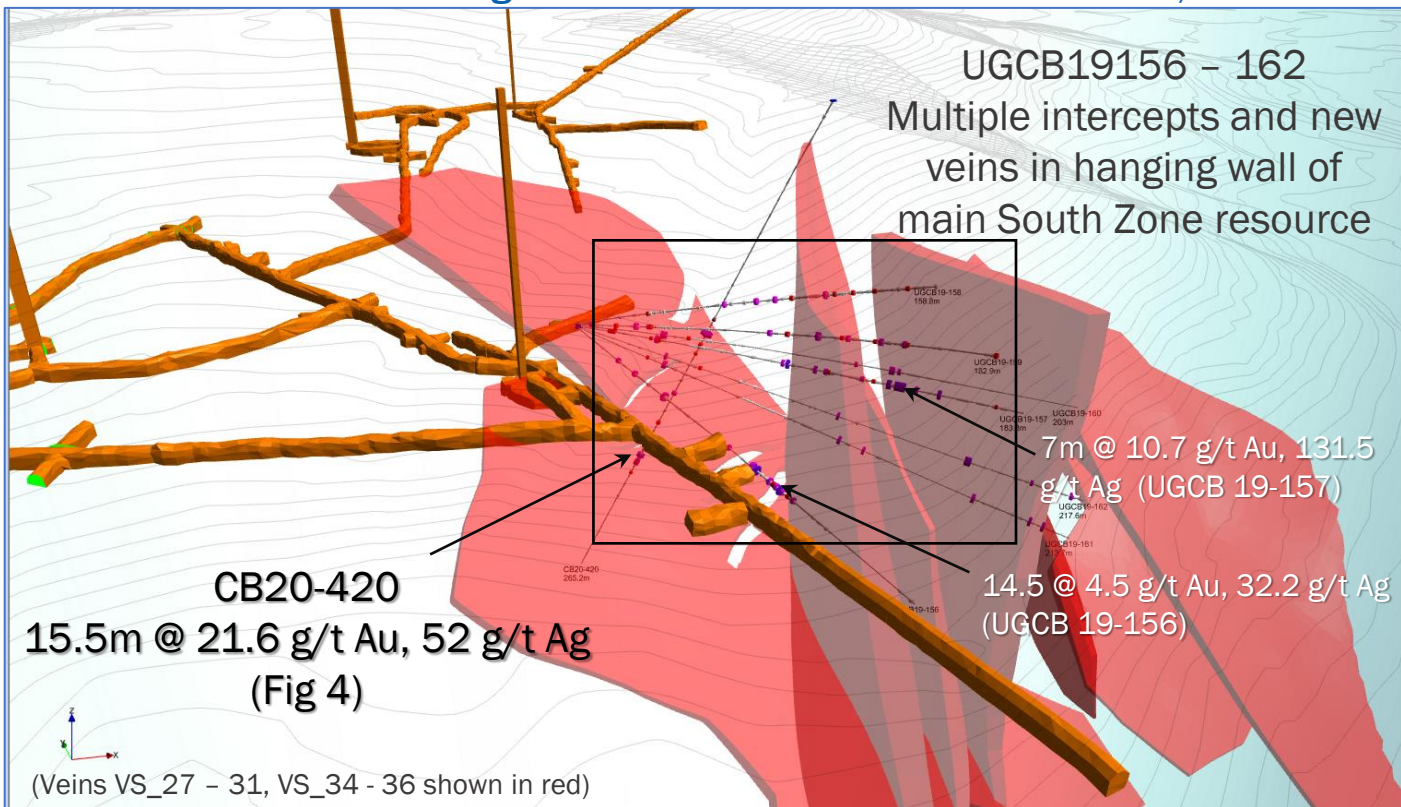
Cerro Blanco - South Zone

3D View to ENE showing location of drillholes reported this Press Release



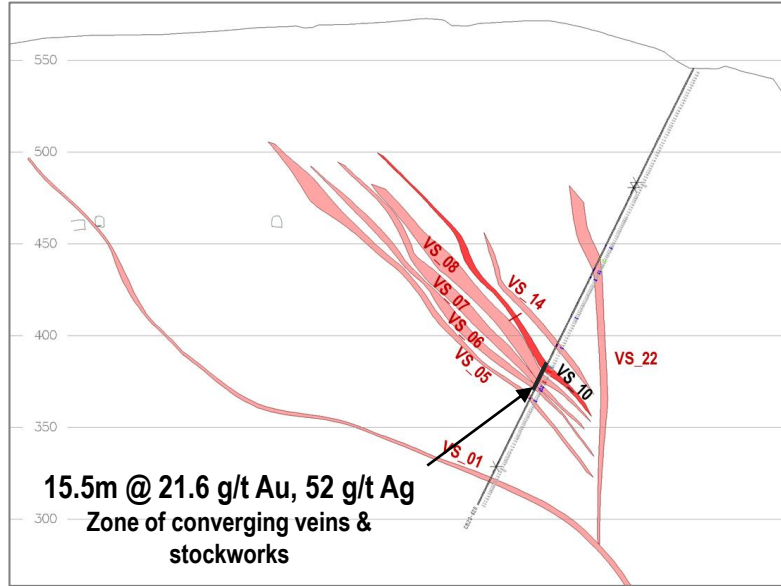
Cerro Blanco - South Zone

3D View to North East showing location of drillholes UGCB19156 - 162, CB 20-420



Drill Hole CB20-420

Cross Section CB20-420



Long Section Vein VS_10

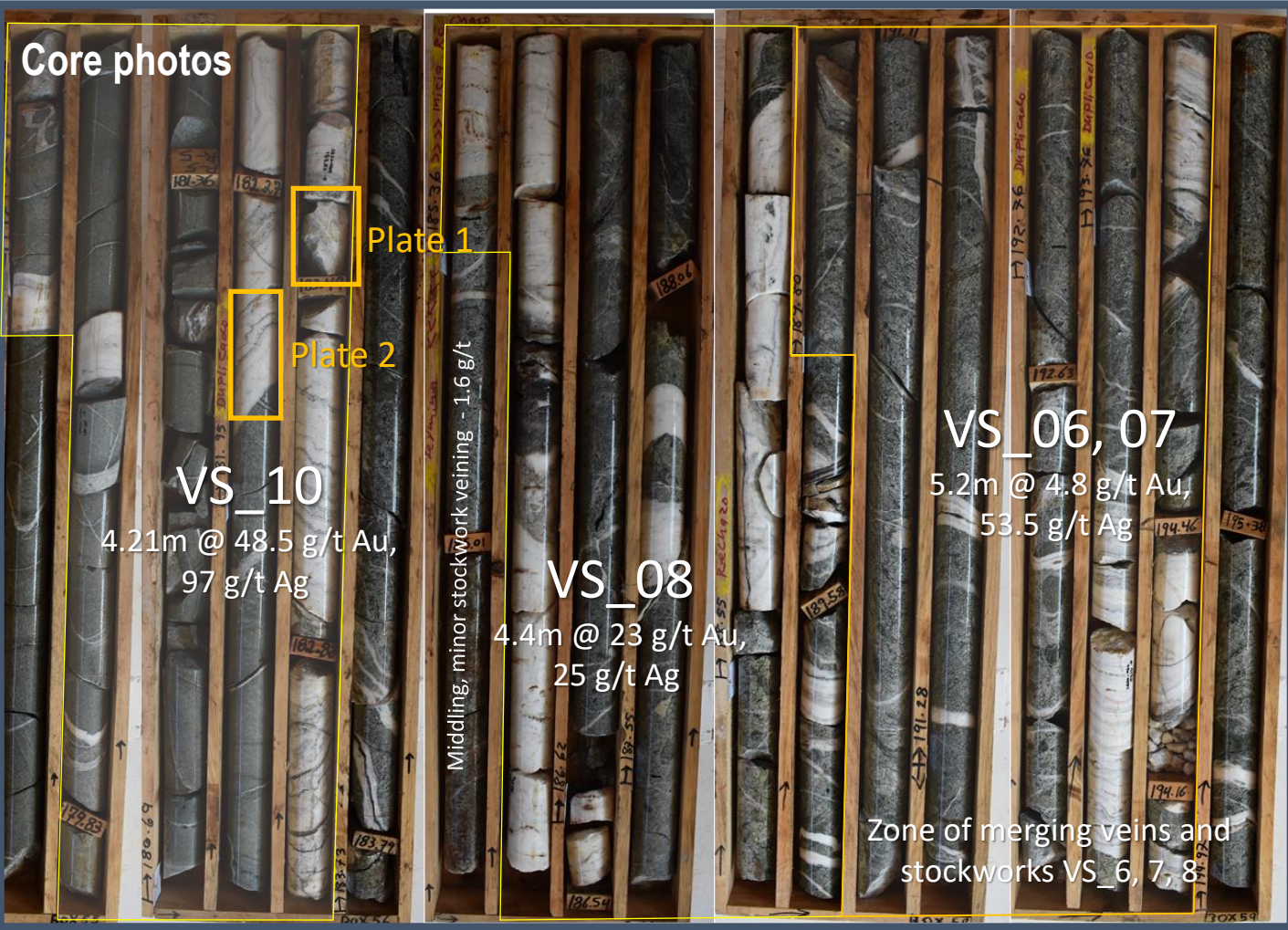
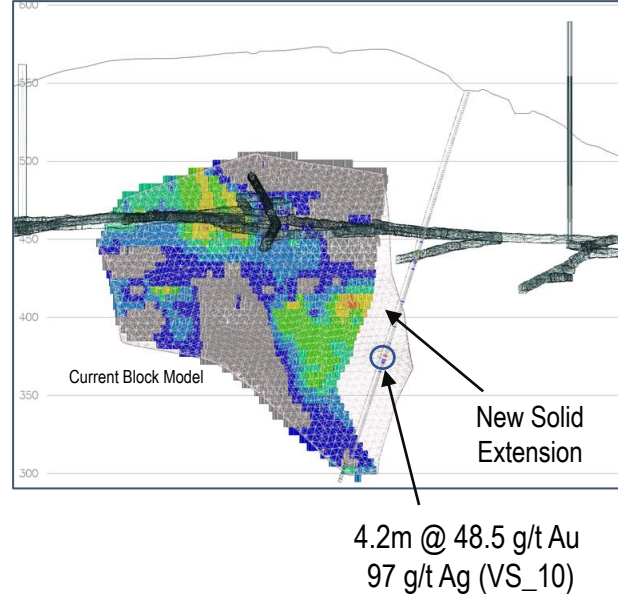




Plate 1

181.95 - 183.73 - 107.7 g/t Au, 223 g/t Ag

VS_10 at 183.6m - Banded vein with predominant cryptocrystalline and originally amorphous silica phases (jigsaw quartz and chalcedony) with abundant acanthite (black blebs) and electrum



Plate 2

VS_10 at 182.05m - Banded vein, ginguro texture, multiphase banding with acanthite (black blebs). Note pristine contact with wallrocks (andesitic tuff)